



New Product – Key Facts

Product:

Stillson Wrenches

- have a unique design which incorporates a step abutment underneath the hookjaw

Application:

can be used for larger capacity pipes

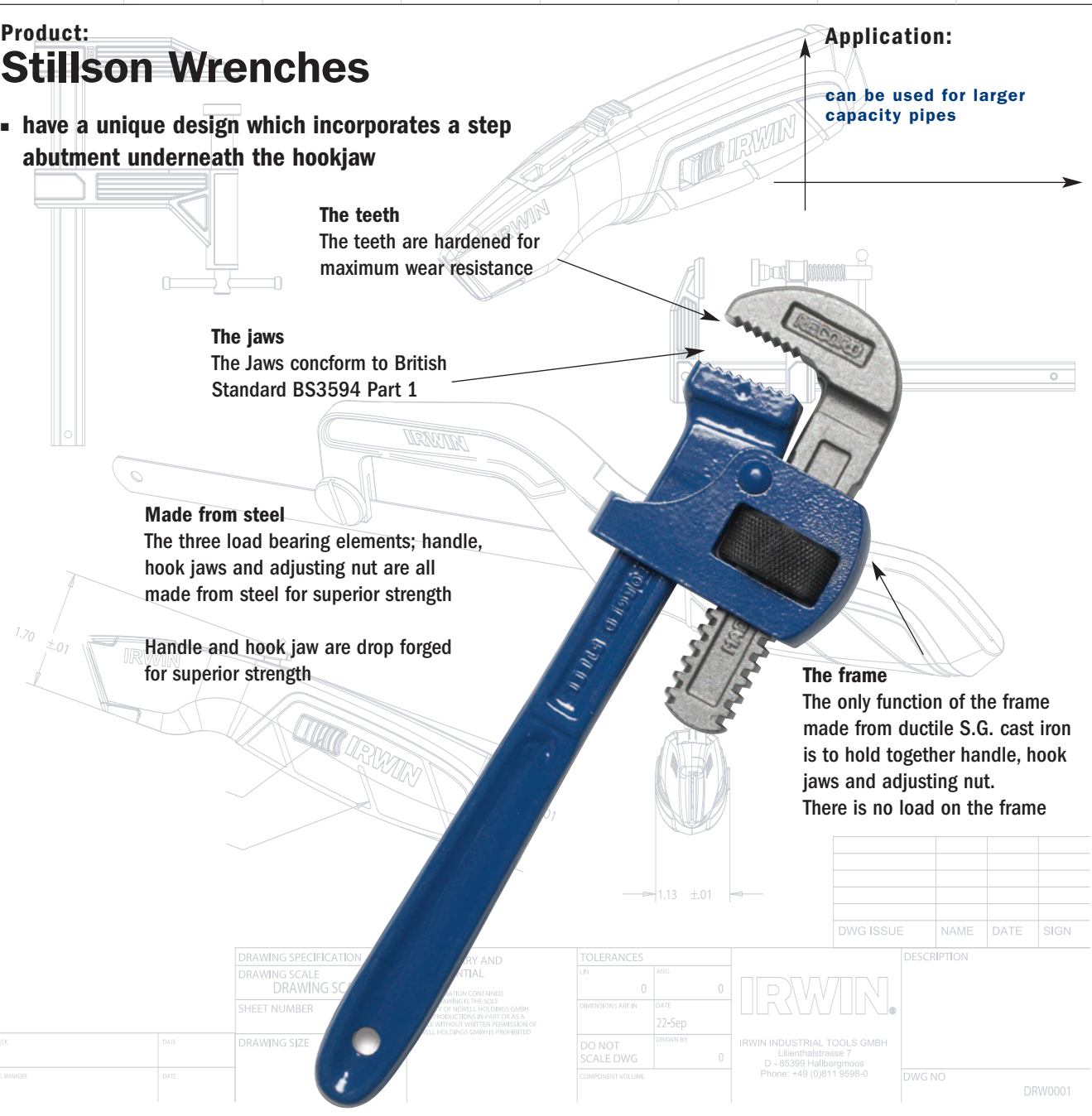
The teeth
The teeth are hardened for maximum wear resistance

The jaws
The Jaws conform to British Standard BS3594 Part 1

Made from steel
The three load bearing elements; handle, hook jaws and adjusting nut are all made from steel for superior strength

Handle and hook jaw are drop forged
for superior strength

The frame
The only function of the frame made from ductile S.G. cast iron is to hold together handle, hook jaws and adjusting nut. There is no load on the frame



DWG ISSUE	NAME	DATE	SIGN

DRAWING SPECIFICATION		TOLERANCES	
DRAWING SCALE	DRAWING SCALE	LR	ANG
SHEET NUMBER	SHEET NUMBER	0	0
CHECK	DATE	DATE	22-Sep
ENG. MANAGER	DATE	DRAWN BY	0
		COMPONENT VOLUME	

IRWIN		DESCRIPTION	
IRWIN INDUSTRIAL TOOLS GMBH			
Lilienthalstrasse 7			
D - 85399 Hallbergmoos			
Phone: +49 (0)811 9598-0			
DWG NO		DRW0001	

STILLSON WRENCHES

Part #	Description	EAN	Shelf Pack	Master Qty
42310800	300/8 Stillson, 200 mm (3/4")	0734442111122	6	-
42311000	300/10 Stillson, 250 mm (1")	0734442111368	6	-
42311200	300/12 Stillson, 300 mm (1-1/4")	0734442111603	6	-
42311400	300/14 Stillson, 350 mm (1-1/2")	0734442111849	6	-
42311800	300/18 Stillson, 450 mm (2")	0734442111962	4	-
42312400	300/24 Stillson, 600 mm (2-1/2")	0734442112082	4	-
42313600	300/36 Stillson, 900 mm (3-1/2")	0734442112204	4	-